

SAGE BUSINESSWORKS

ORDER ENTRY

SPECIFICATIONS (MAXIMUM LIMITS)

- Maximum amount \$9,999,999.99 per quote, order or invoice

Maximum number of:

- Total quotes per customer 3,000*
- Total orders per customer 6,000*
- Total invoices per customer 12,000*
- Kits 50,000
- Line items in a kit 99
- Ship-to addresses per customer 500

Number of:

- Line items per quote, order, or invoice 99
- Sales accounts per quote, order, or invoice 16
- Sales taxes per quote, order, or invoice 3
- Characters in invoice description 20
- Months to keep detail 60

REPORTS

- Back Order Fill Report
- Back Order Report
- Business Graphics
- Credit Memo
- Flash Report
- Gross Profit Report
- Invoice Detail Report
- Invoice
- Kit Orders List
- On-Order Report
- Order Selection Report
- Packing List
- Part Back Order Report
- Pick Ticket
- Quote
- Quote Reports
- Return Reports, Invoice
- Return Reports, Part
- Sales Analysis Reports
- Sales Order
- Sales Order Reports
- Ship-to Address List

Item #	Customer	Service Information	Price Cost	Profit Margin		
*** Customer ID: GOLDEN ***						
1007	GOLDEN	Inv date: 06/01/10 Ord date: 06/21/10	Page: 2 Order #: 24			
Item #	Description	SA	Qty	Unit Price	Price Cost	Profit Margin
1008	20 inch bicycle, boys		4	90.85	90.85 45.00	45.85 50.5%
				Service totals	90.85 45.00	45.85 50.5%
				Totals for GOLDEN	90.85 45.00	45.85 50.5%
*** Customer ID: IBS ***						
1008	IBS	Inv date: 06/14/10 Ord date: 06/08/10	Page: 3 Order #: 23			
Item #	Description	SA	Qty	Unit Price	Price Cost	Profit Margin
1004	26 inch racing bicycle		1	378.85	378.85 378.00	379.85 50.5%
1002	24 inch racing bicycle		1	390.85	390.85 389.00	391.85 50.5%
				Service totals	1148.85 1773.00	379.85 50.5%

When it comes to selling, it helps to have as much information about the customer and your products as possible. With the Order Entry module for Sage BusinessWorks Accounting, your company's sales staff can easily access a variety of useful customer information, including past purchase histories, shipping addresses, credit card information, and much more. In addition, Order Entry can be set up to alert your sales staff when a customer exceeds a credit limit. A hold can then be put on the order until the customer's standing with your organization improves. All this while processing quotes, sales orders, and invoices! Simply put, Sage BusinessWorks Order Entry can increase sales efficiency and, in turn, lead to greater success.

When you integrate Order Entry with the Inventory Control module, Sage BusinessWorks becomes a complete distribution solution. Your staff will have the ability to view the status of parts, including the on hand, on-order, and committed quantities. With all this information at their fingertips, your sales force will be able to more effectively close deals—leading to increased profitability. Plus, if there isn't a sufficient quantity on hand, the software will recommend a substitute. It even displays a picture of the part or item for improved order accuracy. Integrate Order Entry with Inventory Control and boost your sales performance.

Note: The Accounts Receivable module is required when using Order Entry, and the Inventory Control module is strongly recommended.

Specifications denoted with an asterisk () are practical limits. They are to be used as guidelines only and do not necessarily reflect the actual limitation. Individual requirements may vary based on the system you are using.



Sage BusinessWorks

Order Entry

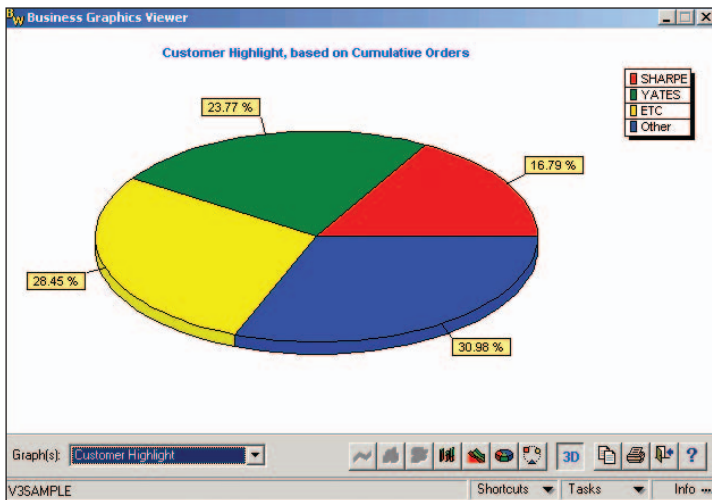
"Sage BusinessWorks ... has allowed many people to access the system at once, tripling the amount of work we can do. Before, I'd waste half the day waiting to use the computer for quotes. So Sage BusinessWorks is saving us money and making us money—and has easily paid for itself just in the first year."

Gayle Snyder, Office Administrator
Mario and Son, Inc.

FEATURES

General Features

- Lets you easily add new customers and parts on the fly during quote, sales order, and invoice entry.
- Provides a gross profit report that can be based on paid invoices and used as a commission report.
- Quickly locates customers, parts, quotes, orders and invoices with flexible search features—increasing sales efficiency.
- Sorts reports by customer, part, product line, or sales order number.
- Look up an order or invoice using the customer's purchase order number.



Order Entry Business Graphics

Stay informed with Order Entry Business Graphics reports. Sage BusinessWorks graphs and charts can be customized to provide you with a high-level view of your organization. You can even send reports using e-mail for efficient distribution of important information.

Maintenance Features

- Lets you easily look up a customer's part purchase history while entering quotes, sales orders, and invoices.
- Alerts you when a customer's credit limit has been exceeded. Furthermore, Order Entry allows sales orders to be automatically placed on hold, so you can immediately stop further shipments while the customer improves his standing with you.
- Tracks sales by customer, part, product line, and sales representative.
- Maintains a template of parts, labor, and comments that normally appear together on a quote, sales order, or invoice.
- Imports ship-to addresses to aid in setting up and maintaining your database.

Processing Features

- Generates quotes for customers and tracks the probability of the quote being converted into an order.
- Quotes, sales orders, and invoices can be copied from another customer for rapid data entry—saving you time and effort.
- Easily exports and imports quotes and sales orders between two "disconnected" Sage BusinessWorks sites, such as a laptop user in the field and a main office. Save time, shorten your sales cycle, and improve your bottom line.
- Converts quotes to sales orders or invoices, and sales orders to invoices instantly.
- Provides online or batch printing of quotes, sales orders, and invoices.
- Distributes quotes, sales orders, and invoices by e-mail, maximizing sales opportunities and reducing postage and preprinted forms costs.
- Optionally prints invoices without the prices or with extended prices so they can be used as packing lists.
- Customizes and prints pick tickets and packing lists to help your staff quickly and easily assemble and ship the orders you've entered.
- Handles modifications of ship-to addresses while entering quotes, sales orders, and invoices so ship-to addresses are always up to date.
- Easily locates quotes, orders, or invoices based on ship-to addresses in the quote, order, or invoice inquiry options.
- Recommends substitutions for out-of-stock items and allows you to easily select these substitute parts while processing quotes, orders, and invoices. This means your shipments won't have to wait when a part is unavailable.
- Allows calculated sales tax amounts to be overridden during quote, order, or invoice entry.
- Allows comments, miscellaneous charges, and labor charges to appear on quotes, sales orders, and invoices.
- Accepts payments and deposits at the time of sales order or invoice entry.
- Allows prepaid sales orders.
- Optionally selects sales orders to be automatically invoiced by release date—saving you valuable time.
- Allows partial shipment of sales orders so you can begin invoicing customers at the earliest opportunity.
- Processes returns to inventory and returns damaged merchandise without returning it to inventory.
- Integrates seamlessly with StarShip shipping manifest system, which calculates freight charges (based on the parts weight maintained in the Inventory Control module) and prints carrier-approved, bar-coded shipping labels and COD tags.